

A photograph of a person's hand reaching out to touch a wall. The wall is covered in numerous colorful fingerprints in various colors like red, blue, green, yellow, and purple. The scene is lit with a strong purple light, creating a vibrant and symbolic atmosphere. The person's hand is in the foreground, reaching towards the wall of fingerprints.

ELIM LIFE CHURCH
ANNUAL REPORT 2022-2023

CONTENTS	3-5: Ministers' Report
	6-12: Community Formation
	13-20: Centred on Jesus
	21-27: Contemporary Culture

Ministers' Report

REPORTING PERIOD

1 October 2022 - 30 September 2023.

An exciting reporting period of walking through change together as a community.

What is new can sometimes make us nervous, however, we have positively embraced new ways to explore and share eternal truth.

I'd like to take the opportunity with my first Elim Life Church AGM report to thank you.

To publicly recognise and acknowledge my appreciation and gratitude for our volunteers, staff team, leadership team, ministry leaders, and our whole community of believers.

The encouragement, help, and support my family and I received was phenomenal throughout this reporting period and has continued with uncommon kindness and love. Thank you.



Change is here to stay and, reflecting on expanding staffing roles, the creation of new departments, connection with the wider community, and watching creativity flourish is faith-stirring. Seeing an explosion of new ELC Kids, learning from new voices, sharing resources, praying with new-to-community-people for the first time, dedications, baptisms in water and Spirit, are all healthy examples of the Kingdom of God coming to North Birmingham.

Discipleship became, and will continue to be, our deliberate focus. Seeking to invest in people finding and following Jesus in the wilds of where we have been given to live and explore.

‘Spaces’ created precious times to meet, eat, and pray with each other. The faith stories born in Spaces are so encouraging and will keep telling the story of God.

In a time of changing gathered moments, our digital evangelism became much more significant. Starting digital projects to facilitate discipleship and add to in-person opportunities is a place of pioneering we will continue to lead in. Our creative best to resource discipleship will remain a part of our call to whole-life worship.

How and when we gather in the days we live in will change but the need for Community Formation will never fade. We need each other.

Moments of fasting have prepared us for feasting, being together to mourn and celebrate, building lives for the glory of God has been evident and important.

Starting the calendar year with our intention to ‘Pray. Listen. Act.’ became a repeating and valuable idea. We looked to remain Centered on Jesus in our discipleship to share the gospel in a Contemporary Culture which continues to rapidly move.

This report is a valuable snapshot of stories in a community committed to Jesus. You will read some of what God has done but certainly not all. There are moments where the voice of God is being heard, Jesus is made known, and the Holy Spirit is moving in our community every single day.

As we reflect on what God has done throughout this reporting period give God thanks and spend time with Him considering our future.

In the inevitable busyness, bright ideas, and learning opportunities, hold on to kindness and extend grace. The presence of God is unlike anything else, far beyond our programmes and noble activities. Look to a future shaping our lives together fixed on Jesus as we continue our creative best in Community Formation, Centred on Jesus, in Contemporary Culture.

There's a way to be ahead of a thing to do.

Community Formation

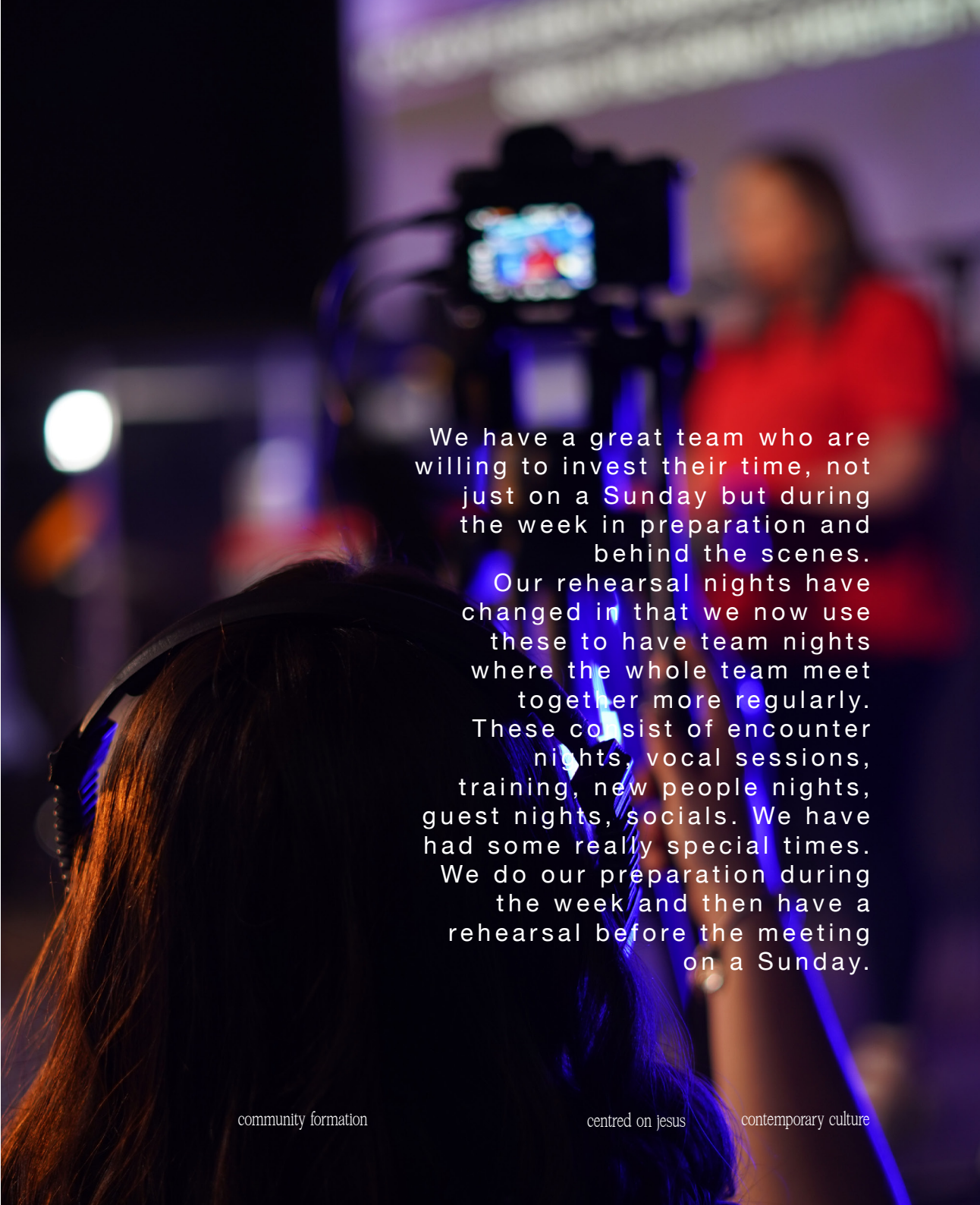
How and when we gather will change but the
need for Community Formation will never fade.

We need each other. Community Formation
means any and every opportunity to gather, in
person and online, with each other as followers
of Jesus making disciples.

The **Music & Production Team**

have recently met as a team to re-evaluate their culture.

This was great as we had lots of input from the team as to what we want the team to be which is a team that grows, develops and supports each other, a team centred on Jesus, pursuing encounters and pointing people to Him, and a team that is open to change, embracing excellence and exploring opportunities.



We have a great team who are willing to invest their time, not just on a Sunday but during the week in preparation and behind the scenes.

Our rehearsal nights have changed in that we now use these to have team nights where the whole team meet together more regularly.

These consist of encounter nights, vocal sessions, training, new people nights, guest nights, socials. We have had some really special times.

We do our preparation during the week and then have a rehearsal before the meeting on a Sunday.



ELC Toddlers

has continued to grow over the last twelve months.

It has been great to see so many Moms, Dads and Grandparents come along to our toddler group of a Thursday. We regularly see 20-25 families each week and this creates a great buzz about the place. The best wins are when we get to chat to individuals and really just spend time with them.

One first time mum has her own additional medical needs and she comes to toddlers every week as it allows her to feel supported, chat through her experiences with other parents and she said she simply feels at peace when she is here.

Soup & Rolls Space

is a space for people to meet, engage and learn from one another, forming friendships around lunch.

The members of the group are very willing to be involved in bible-based discussions. These discussions are generated by the group; maybe someone has a query or general observation or a favourite passage that has impacted them.

When we do not have a specific topic to discuss we turn to the previous Sunday's message.

community formation



centred on jesus

contemporary culture

Sharpen Men's Ministry

meet for regular men's breakfasts pretty much every month.

We've had some breakfast meetings in the church building, delivered from the café or cooked by ourselves, however it seems overwhelmingly popular brothers meet at Sutton Park Toby. The venue is suitable as we quite often get a meeting room that makes it easy to communicate within the group to pray, share testimonies and encourage one another. It's also a great setting to go for a walk before or after eating, though this is an opportunity that seems to need a bit more encouragement.

We also hold a monthly Men's Space. It is a place where men come together, discuss bible passages, share life experiences and support each other. The word of God and testimonies are regularly shared. The men praying together at the meetings is powerful. We have enjoyed meeting new church members and it seems easier to do this at the "Space" rather than at a usual Sunday meetings.

community formation

centred on jesus

contemporary culture



STA TIS TICS

ELC SNAPSHOT

257 Adults

153 Children & Youth

Average age: **57**



Estimated volunteer hours this year:

34,332

community formation
centred on jesus
contemporary culture

GOING FORWARDS

Inspire Women's Team

Inspire Women's Team: Pray that we can continue to grow in our gifts so that we can serve the women in our church and community. We want to listen to God and serve with impact and creativity.

The Garden Team

The Garden has set a new bar in giving our creative best. We want to not sit back and lean on stuff we've done before but push boundaries and find new ways of telling the story of Jesus. There's a new excitement in bringing a fresh thinking to what we do in community, all of which is centred on Jesus in contemporary culture.

Centred On Jesus

There's a lot we could do.

There's a few things we'll try to do.

There's one thing we must do...

make disciples.

As a community we are fuelled by The Great

Commission we are aware that we exist as a

community to find and follow Jesus.

This year we have started a podcast called 'Around the Fire'.

A place for conversations to nurture hearts and build lives following Jesus, thinking more deeply about big ideas and how to apply them! We love to dig deeper into what God is saying and doing and our Sunday gathered spaces don't give us the time.

Sarah W and Pastor Jonny, with Andy's skilled help, record episodes of conversations around the themes we are exploring as a community. Imagine you are sat around the fire, it's late on a summer's evening and the conversation gets deeper. How are we following Jesus? What is the Spirit saying? How can we build community together?

Podcasts are a growing area that help us communicate and engage with people beyond our gathered spaces. We want this to be an ongoing resource to help us as we find and follow Jesus in the wild. Please give it a go and we'd love to engage with any of your feedback, questions or ideas, so email us at: podcast@elimlifechurch.co.uk or DM us on any of our socials.

EP1: ASCENSION

Around The Fire.



The **ELC Kids Team** have seen a change in Leadership this year.

Jill and Dawn have served so faithfully over the years- thank you so much for all that you have both done.

Over the last 12 months we have changed our programme from theme based to story based- looking at characters and stories from the Bible. The kids and leaders have loved it. We have had some great conversations about how we keep Jesus in our hearts and also learned that there are two Josephs in the Bible!

Gemma and Mark Evans have taken on the leadership of ELC Kids and can't wait to see all that God will do in the team and the children.

Over the summer we have added 4 people to our team, this has been amazing, such a win. One of the things that we are doing as we build team together and continue to centre ourselves on Jesus is taking time to have coffee, or hot chocolate, and chat together. It's so important to chat and just be together talking about faith and what God has done this week in our lives.





The Chapel re-opened this year.

We renewed The Chapel this year and re-opened it for anyone in our community to use – 24-7. You can sign up online or by calling the church office.

At times there are dedicated calls to collective prayer, where we aim to cover consecutive hours in prayer. In this space there are ideas to help us pray and connect with the themes that God has been speaking to us about as a community; whether that's Three Minutes to Pray, Listen, Act or a reflection on Peter's life and discipleship from Summer in the City to praying for our streets as a follow on from The Garden at Easter

Just wanted to say thank you for the prayer room and to all those involved in setting it up. The minute I walked through the door the smell, the peace the gentle music I could have cried. The time to have in the quiet and just be with God was the best - Verena

Elevate Youth

are our 11-18s here at ELC.

A highlight this year would have to be seeing a growth in our young people and their worship. It's one thing at events or camps seeing them worship, but moments in their normality of everyday and on a Sunday seeing them worship, just them and God, is so precious. Whilst standing with their friends, seeing some of them not bothered what the person to the left or right may think, but wanting to just connect with God is everything!

Elevate DEEPER – is a time set aside from the normal youth programme to worship and encounter God in a different way. Young people got to explore sung worship, reflective worship, scriptural worship, artistic worship and so on.





A HUGE thanks to everyone who gave financially or prayerfully to our young people to support them going away to Limitless Festival! Soon you will be able to see our highlights video of all they got up to! Your investment was **SO WORTH IT!**"

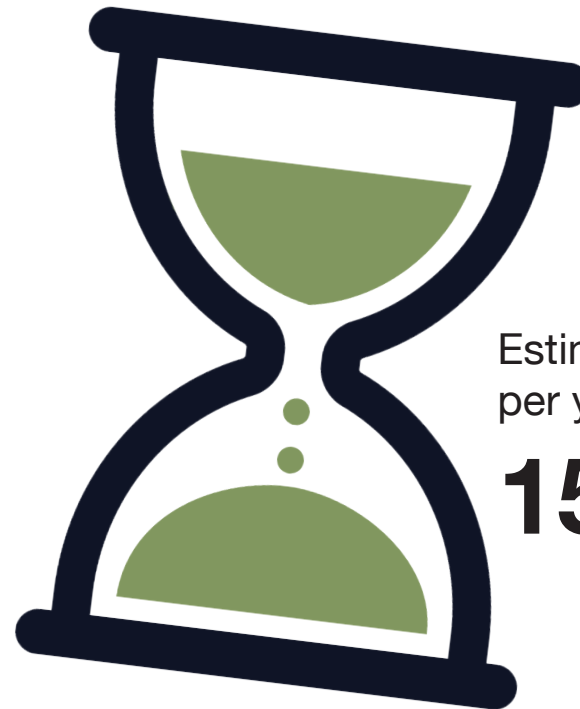
STATISTICS

ELEVATE YOUTH · ELS KIDS ·
ELC TODDLERS

69 Under 18s in September 2022

153 Under 18s in September 2023

134 Individual under 18s we see
each month



Estimated minimum volunteer hours
per year:

15,400

community formation
centred on Jesus
contemporary culture

GOING FORWARDS

Leadership Development

A small cohort will be going through some 5Q training to explore the five-fold ministry gift. The aim is to create a bespoke training opportunity for individuals to grow in awareness of their gifting and an opportunity to grow in it.

Prayer

Some ideas include, developing a team of people to offer pastoral prayer during our gathered times; continuing to equip, resource and champion prayer as a formational practice individually and together; making more use of The Chapel as a space to pray; finding creative and helpful ways to embed prayer into our life of faith.

Contemporary Culture

We love our heritage and our history and believe

we inherit habits of sharing the Gospel in ways

that belong to the days that we live in. These

are reflected in the spaces and places used to

serve a Contemporary Culture which continues

to rapidly move.

Minute with MAX



Summer
in the city

community formation
centred on Jesus
contemporary culture

Minute With Max was born during the 'Acts of Faith' series, with the simple concept of Max asking people questions about the week's topic. Max is one of our youth here at ELC, and on a trip to Limitless Festival saw what we call 'run & gun' style interviews happening with youth across the camp. He thought this would be a fab concept to bring to church but never expected that he would be the one giving the interviews.

There are probably many stories and bloopers over the weeks we've been doing MWM, but I think every week has been a hi-light. Hearing from so many different people. Their favourite ice-cream, their favourite thing to do in the holidays, right to sharing Jesus at work. So many fun and diverse and interesting answers."

community formation

centred on jesus

contemporary culture

Foodbank & Warm Space

Over the reporting period we have seen peaks and troughs in the number of referrals or people asking for help e.g. 77 in November 2022 and 42 in May 2023. The biggest issue has been the rise in the cost of living.

Government payments have helped families, and these have been reflected in the numbers seeking help from food bank. With just one week left, we have already fed **1794 people** which is almost back up to the 2020-2021 total of 1819.

Our collection point at Warren Road has made it easier for people to access the food bank. The food bank is there to serve the people who live in the local community in a practical way. The main purpose of the **Warm Welcome is to provide a safe environment for lonely or isolated people to come and meet others.** The two functions complement one another very well.

The WW is a place where church members can engage with people from our local community. We would certainly welcome anyone who would like to get involved.



ELIM LIFE CHURCH

FOODBANK

Are here to help You!

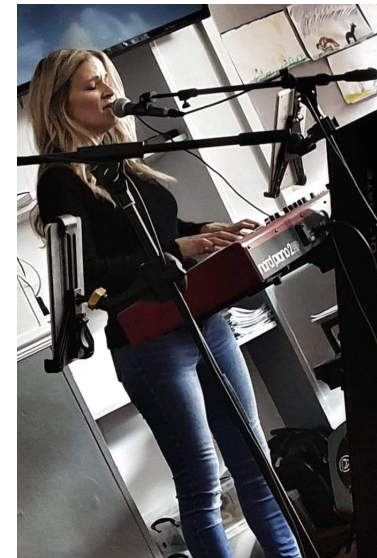




Inspire Women

have had some great community events over the last year.

We want to listen to God and serve with impact and creativity. Please pray that we can find new ways to encourage women of all ages to attend. Whether you have been attending ELC for 10 days or 10 years you are all welcome.



STATISTICS

FOODBANK

1822 people fed for our Foodbank this year

1417 Parcels this year

Average of **28** per week



Minimum volunteer hours per year:

2500



community formation
centred on jesus
contemporary culture

GOING FORWARDS

Minute With Max

Minute with Max has grown and even went on tour to Limitless Festival 2023. We believe this has longevity and it's been so good to see Max grow in his confidence and faith and to see his mates Deshawn & Dami become part of the MWM team. It's been great for our Social Media and a fresh fun way of sharing Jesus with people across our digital platforms.

Foodbank

We are extremely grateful to our church family for their continued support and commitment to the work of food bank. Thank you. We want to continue to develop our Warm Space, the facility is used mostly by our food bank users, we have still to establish a core group of regulars so we can introduce extra activities.

A Huge Thank You to everyone at Elim Life Church.
If Elim Life Church is where you are planted, one of the best
ways to grow in faith is to get connected in Spaces and/or teams.
Please get in touch.

enquiries@elimlifechurch.co.uk

